



AGED AND COMMUNITY CARE



NATIONAL CODE: CHC33021

CERTIFICATE III IN INDIVIDUAL SUPPORT

Start a fulfilling career in aged care with this qualification, ideal for those looking to make a positive impact on the lives of elderly individuals.

CAMPUSES

BRISBANE CAMPUS (ADELAIDE STREET 2)

GOLD COAST SOUTHPORT CAMPUS

OVERVIEW

INTAKES
Monthly

DURATION
34 weeks

INDUSTRY PLACEMENT
120 hours

INTERNATIONAL STUDENTS
Yes

CRICOS CODE:
115079K

CONTACT HOURS
20

16

Entirely On-Campus

THIS COURSE ARTICULATES OR PACKAGES WITH THE FOLLOWING UNIVERSITIES:



CERTIFICATE III IN INDIVIDUAL SUPPORT

About this Course:

This course prepares you to deliver person-centred support that enhances the independence and wellbeing of older people while effectively communicating and working within care environments. Combining theoretical knowledge with practical experience, you will be well-equipped to make a meaningful contribution to a crucial field, meeting the growing demand for skilled and compassionate professionals.

What You'll Learn

- Provide individualised support and facilitate empowerment
- Promote independence and wellbeing
- Recognise healthy body systems
- Communicate effectively in health and community settings
- Work with diverse populations and adhere to legal standards
- Apply infection control measures and follow safe work practices
- Support individuals with dementia and mental health issues
- Deliver palliative care and foster family relationships

Career Outcomes

PERSONAL CARE ASSISTANT

RESIDENTIAL SUPPORT/CARE WORKER

COMMUNITY SUPPORT WORKER

NURSE'S AIDE

Our graduates work with industry leaders



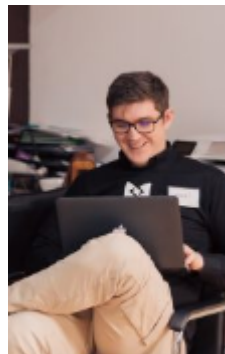
Here's what our Certificate III in Individual Support students think

See why more than 20,000 students have chosen Charlton Brown



Zhang Jing

An effective teacher is one who directs, facilitates and manages the students' learning process. Da Teng is one of them. I like his flexible teaching style, positive belief in the ability to solve translating problems, willingness and motivation to listen and caring for students.



Rob Manz

I'm very happy with the service and education Charlton Brown provided! Alvin's teaching was fun, creative and entertaining. He likes to talk about trending topics in the class. He's also fast at answering any questions.

INTAKE DATES

2025

FEBRUARY
Monday, 03rd

MARCH
Monday, 03rd

APRIL
Monday, 28th

MAY
Monday, 19th

JUNE
Monday, 16th

JULY
Monday, 14th

AUGUST
Monday, 04th

SEPTEMBER
Monday, 01st

OCTOBER
Monday, 13th

NOVEMBER
Monday, 10th

DECEMBER
Monday, 01st

TUITION FEES (DOMESTIC / PERMANENT RESIDENT)

Course Name	Course Duration	Domestic / Permanent Resident	Campus Availability	Intakes
Certificate III in Individual Support	34 weeks	\$4,000	BNE2 GLD	Monthly

ENTRY REQUIREMENTS

AGE	GRADE	IELTS
18	11	5.5

■ AGE

Minimum age of 18 years or turning 18 years old prior to commencement of the course

■ EDUCATION & EXPERIENCE REQUIREMENTS

Year 11 Australian Senior High School Certificate, or equivalent (e.g. completion of Year 12 or High School in the students home country) with full academic results.

■ ENGLISH LANGUAGE

Upper-Intermediate English (equivalent to 5.5 academic or general IELTS) or successful completion of college LLN Test

■ REQUIRED IDENTIFICATION

Photo ID and evidence of citizenship (international students must provide copy of passport)

■ COMPUTER SKILLS & EQUIPMENT

Students on this course require computer access for learning purposes and to complete course assessments. As such, learners must have beginner/intermediate computing skills including use of Microsoft Office programmes, in addition to hardware requirements of a desktop or portable computer with keyboard, pointing device, speaker, web camera and microphone, and a broadband internet connection.

■ ADDITIONAL REQUIREMENTS

Applicants for this course must be able to make themselves available to undertake the industry placement that forms part of the training and assessment activity. Students must meet specific eligibility criteria before commencing. Evidence of successful completion of the following requirements must be submitted six (6) weeks prior to the start of the work placement: National Police Check, Working with Vulnerable People Registration (for students in Tasmania) or NDIS National Worker Screening Clearance (for students in Queensland), First Aid Certificate HLTAID011 - Provide First Aid, Evidence of Full COVID-19 Vaccination, Annual Influenza Vaccination. Specific Updates to English Language Requirements for Student Visas
 General Student Visa: The minimum IELTS score has increased from 5.5 to 6 (or equivalent).
 Packaged ELICOS: The minimum IELTS score to undertake a packaged English Language Intensive Courses for Overseas Students (ELICOS) program has increased from 4.5 to 5.0.

■ FURTHER INFORMATION

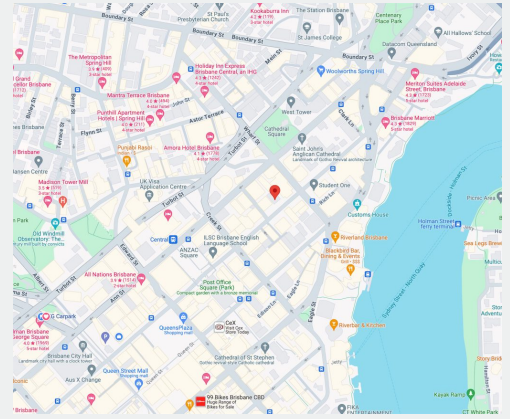
Students who are unable to meet the academic or English language criteria may in some cases be eligible to undertake our Language, Literacy & Numeracy (LLN) test. Criteria may change at any time without notice. Additional English language requirements may apply to international applicants from non-English speaking backgrounds wishing to articulate on a visa package into a university programme. Students must be able to (and are required to) enrol, participate, demonstrate progression-of, and complete this course.

BRISBANE CAMPUS (ADELAIDE STREET 2) COURSE TRAINERS

BRISBANE CAMPUS (ADELAIDE STREET 2) & FACILITIES

YOUR CAMPUS

Charlton Brown is proud to introduce its latest campus located at 316 Adelaide Street, Brisbane, a state-of-the-art facility designed to provide students with an unparalleled learning experience. Situated in the heart of Brisbane's bustling city center, this modern campus is not just a place of learning but a hub of innovation and professional development. 316 Adelaide Street is more than just its physical amenities; it's located in a vibrant area surrounded by cafes, parks, and cultural sites, providing students with a rich urban experience. The campus is easily accessible by public transport, making it convenient for students traveling from various parts of the city. Charlton Brown's new campus reflects our commitment to providing high-quality education in an environment that inspires and motivates. It's a place where students can learn, grow, and prepare for successful careers in their chosen fields.



[316 Adelaide Street, Brisbane](#)

SESSION LOCATIONS

GOLD COAST SOUTHPORT CAMPUS COURSE TRAINERS

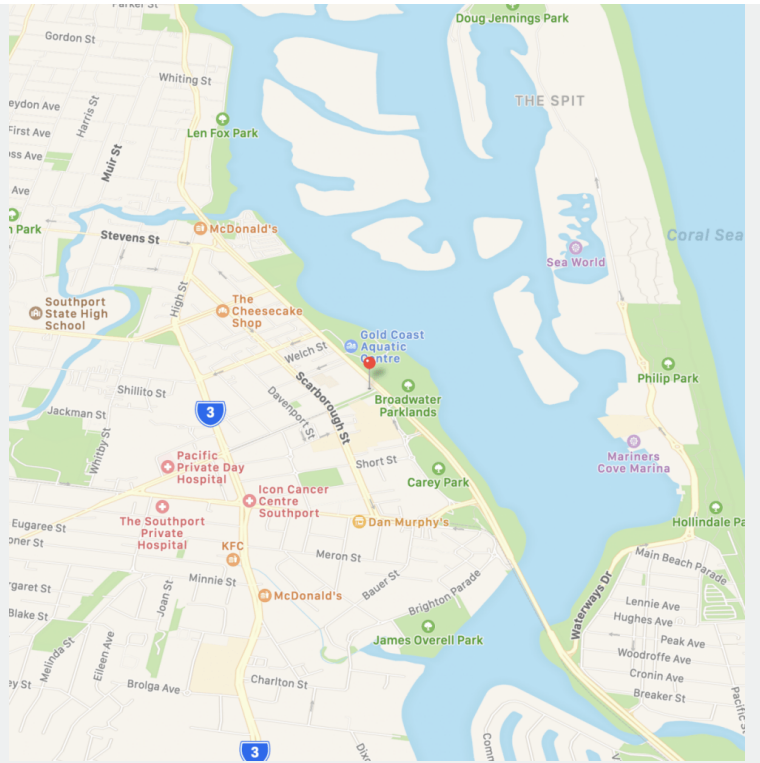


Toriqul Mozumder

GOLD COAST SOUTHPORT CAMPUS & FACILITIES

YOUR CAMPUS

Nestled along Queensland's most iconic coastline, our Gold Coast Centre is a study and recreation paradise, just minutes from the surf, gigantic shopping malls & a wealth of attractions.



1 Nerang Street, Southport

SESSION LOCATIONS



GOLD COAST ROOM 9

GLD
CST

PROJECTOR

MULTIMEDIA WALL

LECTURE SEATING

NIET Group Gold Coast Centre is our coastal centre of excellence, with light-filled spacious rooms nestled along the vibrant Queensland Coastline.

VIEW IN MAP

